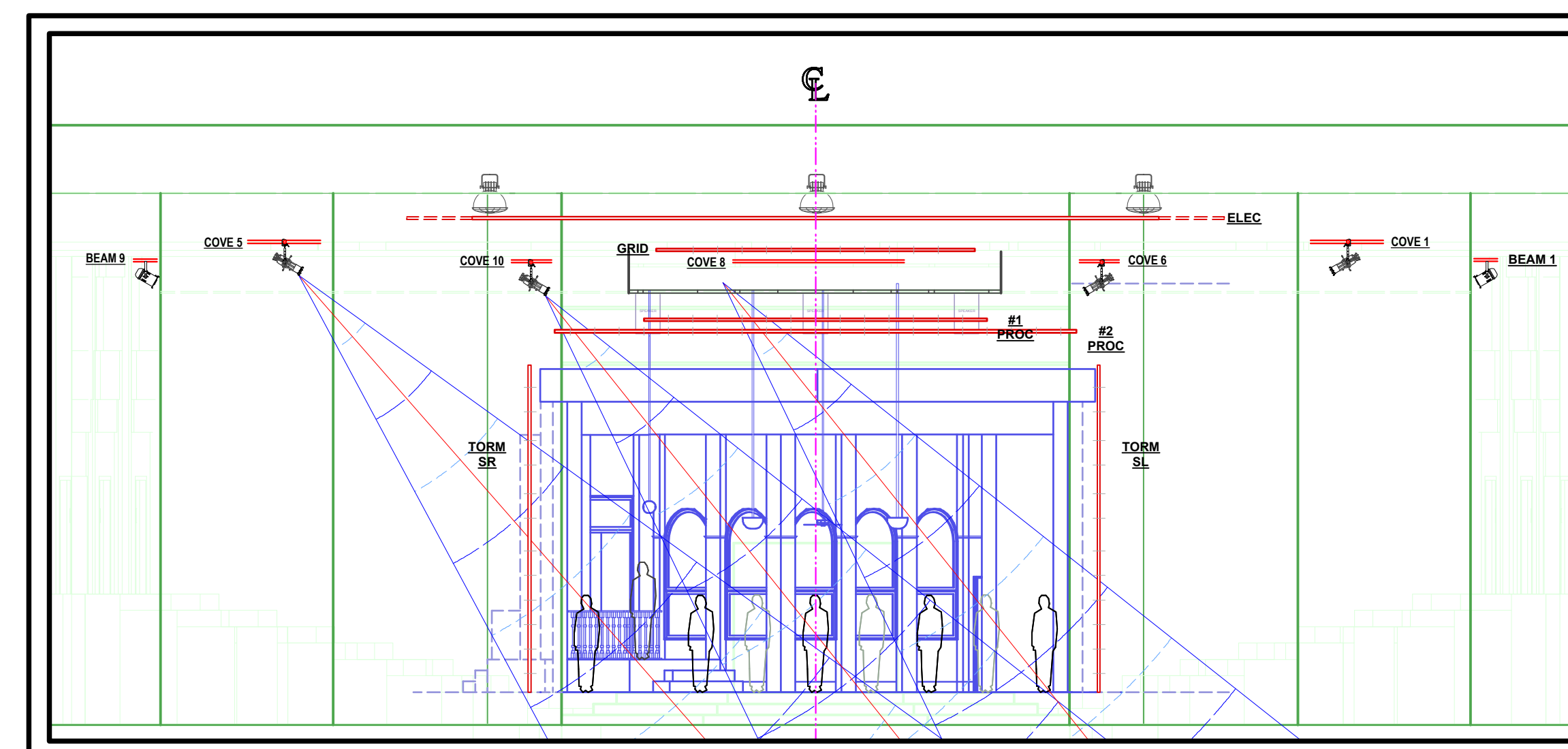
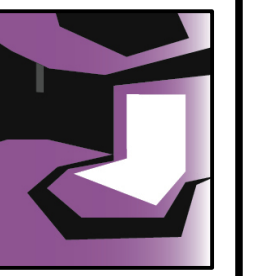


SD System Angles 1/8"=1'-0"



SD TEMP System Angles 1/8"=1'-0"

UNIVERSITY OF  
EVANSVILLE  
SHANKLIN THEATRE  
EVANSVILLE, IN



## The Front Page

By Charles MacArthur

DATE: 4/28  
DRAFT: Final  
CONTACT:  
sstolnack@gmail.com  
ME: Fred

DESIGN TEAM  
DIRECTOR: R. Scott Lank  
SCENIC DESIGN: E. Renschler  
LIGHTING DESIGN: S. Stolnack  
COSTUME DESIGN: No idea  
SOUND DESIGN: S. Stolnack?

LD: S. Stolnack  
ALD: Fred

SCALE: 1/4"=1'  
Except Where Noted

ELEVATIONS

SHEET  
**3**  
OF 6