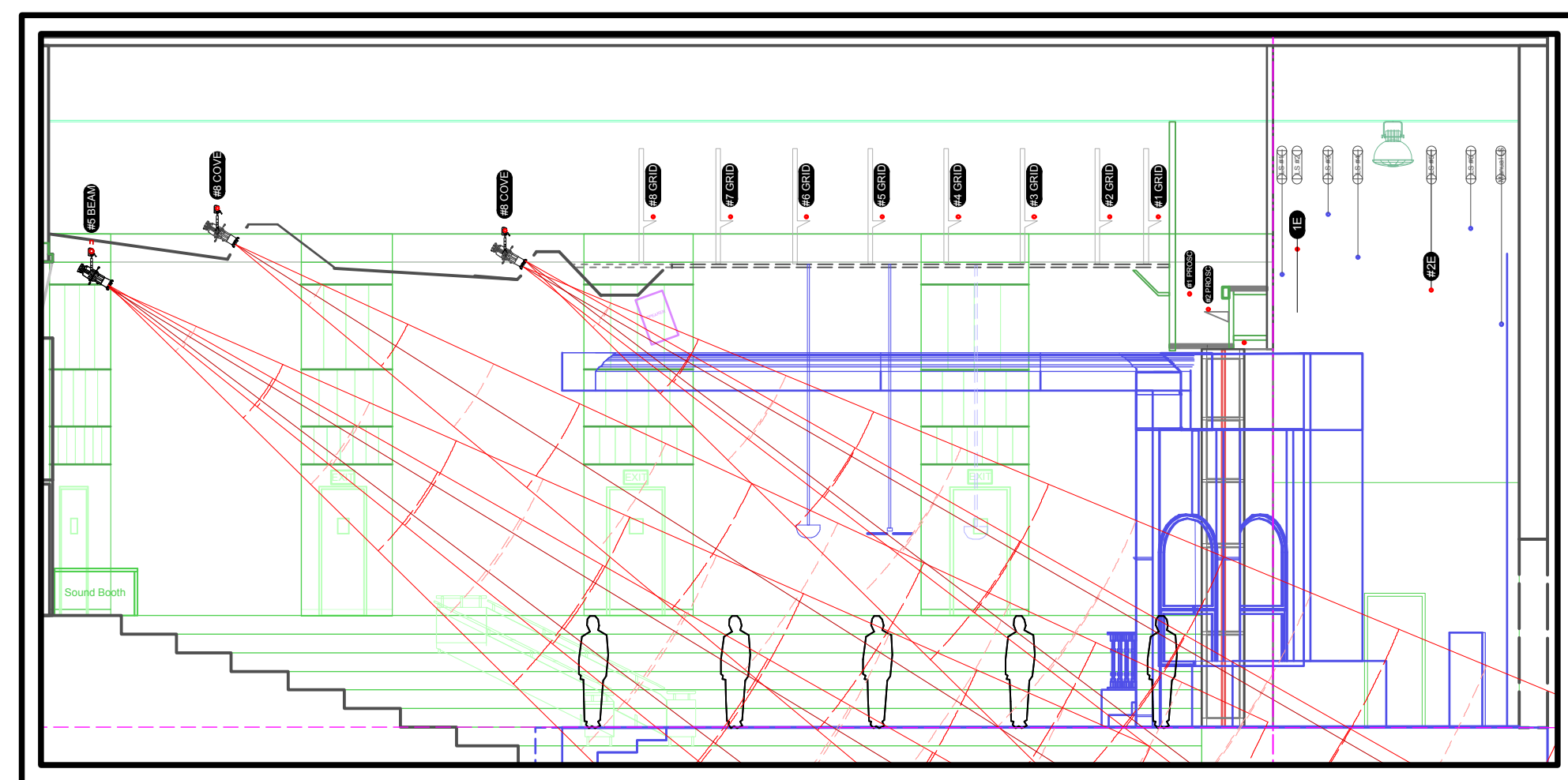
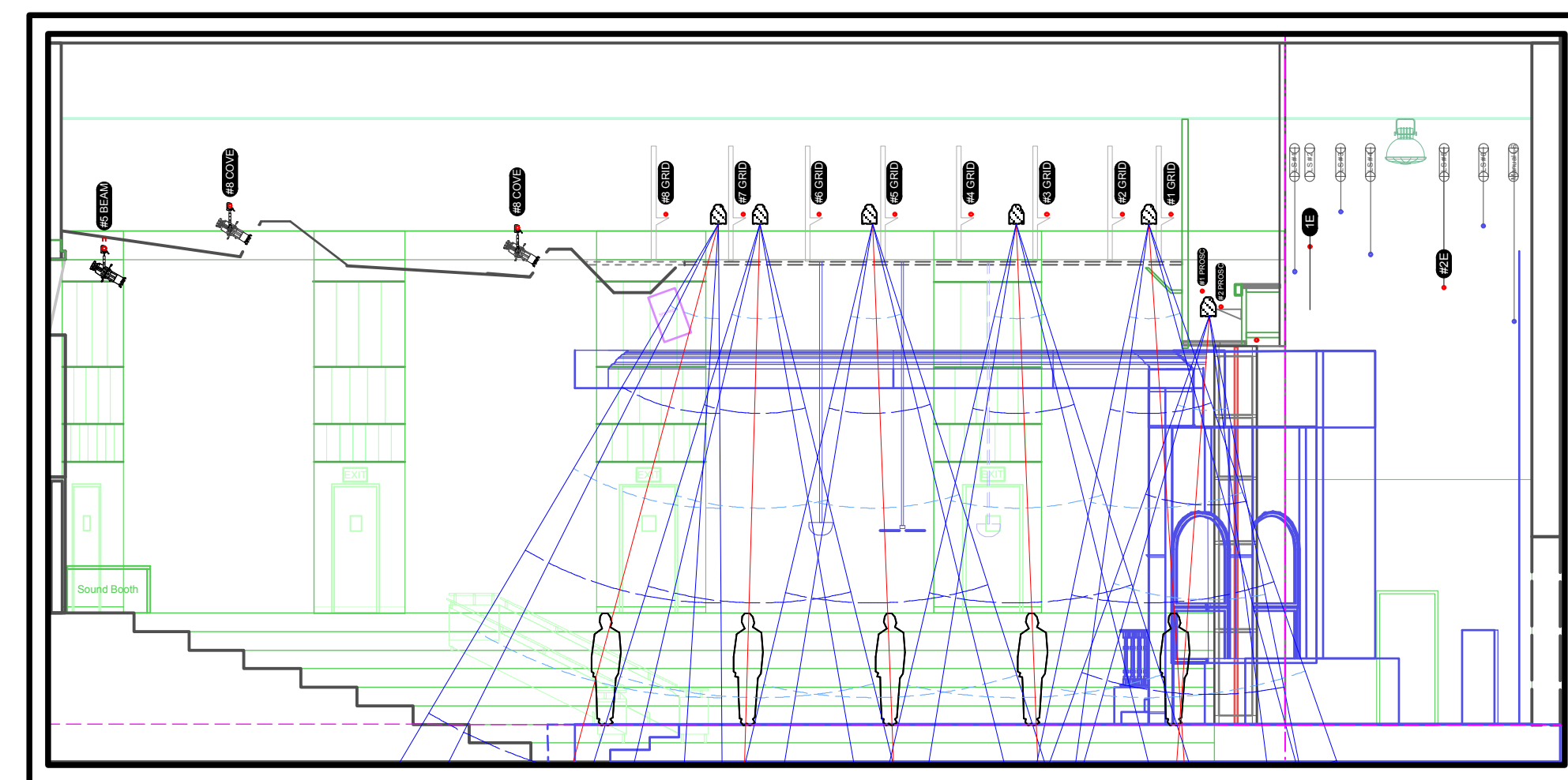


BAX System Angles 1/8"=1'-0"



FNT System Angles 1/8"=1'-0"



DN System Angles 1/8"=1'-0"

UNIVERSITY OF
EVANSVILLE
SHANKLIN THEATRE
EVANSVILLE, IN



The Front Page
By Charles MacArthur

DATE: 4/28
DRAFT: Final
CONTACT:
sstolnack@gmail.com
ME: Fred

DESIGN TEAM
DIRECTOR: R. Scott Lank
SCENIC DESIGN: E. Renschler
LIGHTING DESIGN: S. Stolnack
COSTUME DESIGN: No idea
SOUND DESIGN: S. Stolnack?

LD: S. Stolnack
ALD: Fred

SCALE: 1/4"=1'
Except Where Noted

SECTION SHEET
2 OF 6